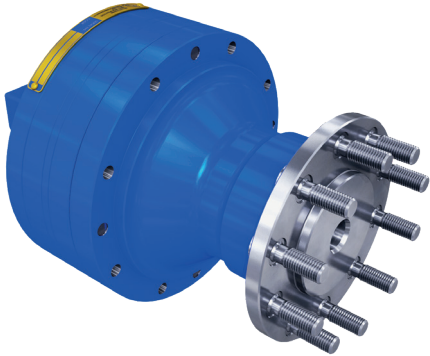


XF MOTOR

Compact, modular design, customisable, multi-lobed radial piston motor



- 325 bar continuous pressure
- Radial or axial port options
- Fixed displacement
- Compact design with three output styles
- Free wheel capability
- Fast delivery options available

XF02

| Nominal Displacement (cc/rev) | 150 | 200 | 280 | 340 |
|---------------------------------|-----|-----|-----|-----|
| Geometric Displacement (cc/rev) | 150 | 200 | 280 | 340 |
| Specific Torque (Nm/bar) | 2.4 | 3.2 | 4.5 | 5.4 |
| Max Pressure (bar)* | 420 | 420 | 420 | 420 |
| Max Cont. Speed (rpm) | 550 | 500 | 390 | 320 |
| Max Cont. Power (kW) | 18 | 18 | 18 | 18 |

XF04

| Nominal Displacement (cc/rev) | 300 | 350 | 400 | 480 | 560 | 620 | 680 |
|---------------------------------|-----|-----|-----|-----|-----|-----|------|
| Geometric Displacement (cc/rev) | 300 | 350 | 400 | 480 | 561 | 620 | 680 |
| Specific Torque (Nm/bar) | 4.8 | 5.6 | 6.4 | 7.6 | 8.9 | 9.9 | 10.8 |
| Max Pressure (bar)* | 420 | 420 | 420 | 420 | 420 | 420 | 420 |
| Max Cont. Speed (rpm) | 375 | 262 | 250 | 222 | 195 | 178 | 160 |
| Max Cont. Power (kW) | 29 | 32 | 35 | 36 | 36 | 36 | 36 |

XF05

| Nominal Displacement (cc/rev) | 390 | 490 | 560 | 680 |
|---------------------------------|-----|-----|-----|------|
| Geometric Displacement (cc/rev) | 393 | 493 | 559 | 681 |
| Specific Torque (Nm/bar) | 6.3 | 7.8 | 8.9 | 10.8 |
| Max Pressure (bar)* | 420 | 420 | 420 | 420 |
| Max Cont. Speed (rpm) | 440 | 350 | 320 | 260 |
| Max Cont. Power (kW) | 30 | 30 | 30 | 30 |

XF10

| Nominal Displacement (cc/rev) | 780 | 880 | 980 | 1050 | 1120 | 1240 | 1360 |
|---------------------------------|------|------|------|------|------|------|------|
| Geometric Displacement (cc/rev) | 785 | 886 | 986 | 1052 | 1117 | 1239 | 1362 |
| Specific Torque (Nm/bar) | 12.5 | 14.1 | 15.7 | 16.7 | 17.8 | 19.7 | 21.7 |
| Max Pressure (bar)* | 420 | 420 | 420 | 420 | 420 | 420 | 420 |
| Max Cont. Speed (rpm) | 230 | 200 | 180 | 170 | 160 | 145 | 132 |
| Max Cont. Power (kW) | 60 | 60 | 60 | 60 | 60 | 60 | 60 |

* Running conditions that utilise the maximum/peak pressure capabilities of the motor should be kept to a minimum and if utilised, done so as part of a known duty cycle.