

# SB SERIES BLENDERS

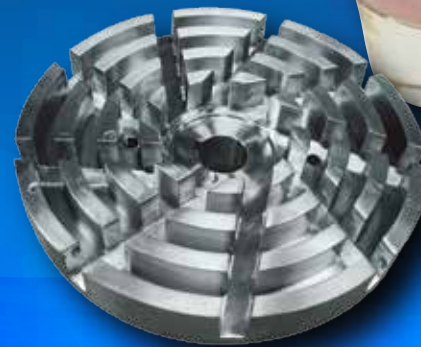
ADJUSTABLE, MULTI-TASKING, EFFICIENT SHEAR BLENDING

Mixing is becoming increasingly important in the widest variety of processes. Today's products often comprise a magnitude of ingredients such as stabilizers, thickeners, gums, sugars and other additives. This offers a challenge to customers to provide a consistent blend quality in the most efficient manner.

To meet this challenge Ampco has developed three types of shear blenders that are based on our popular LF platform. This means shared wear items for your pumps and easy piping solutions. The wide range of mechanical seal materials (single and double mechanical) and elastomers from the LF line are also available to fine tune the shear blender to the customer's needs.

## SB/SBH/SBI SHEAR BLENDING ADVANTAGE:

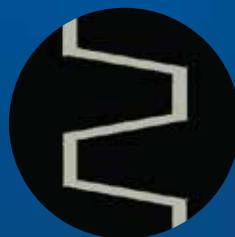
- Uniform and repeatable product batches
- Reduce process times
- Application-specific adjustability for custom fine-tuning of the end product
- Familiarity and ease of design (front loading seal)
- Applicable for a small laboratory or large-scale production
- Front-loading mechanical seals (single and double)



## Ampco SB Shear Blender

### The adjustable multi-tasking unit

The SB shear blender offers flexibility for a variety of products. The clearance of the Ampco SB shear blender can be adjusted with the use of simple shims (provided) to get the blend quality desired. To avoid damage to the product, the SB shear blender is the best choice for sensitive applications.



## Ampco SBH Shear Blender

### The high shear blender

The SBH shear blender maximizes shear-area by having several rows of rectangular teeth that mesh with each other at close clearances. This is the best blender for improving process time when the highest shear is desired.



## Ampco SBI Shear Pump

### The ability to pump and blend in a single stage

The SBI shear pump moves the product with considerable capacity and pressure capabilities. This is achieved through a hybrid design of a fine-tuned impeller paired with two rows of rectangular shear teeth. Users will be surprised at the performance of this pump as a replacement to a feed-pump and blender setup for certain applications.



Manufactured, assembled and tested in Glendale, WI.

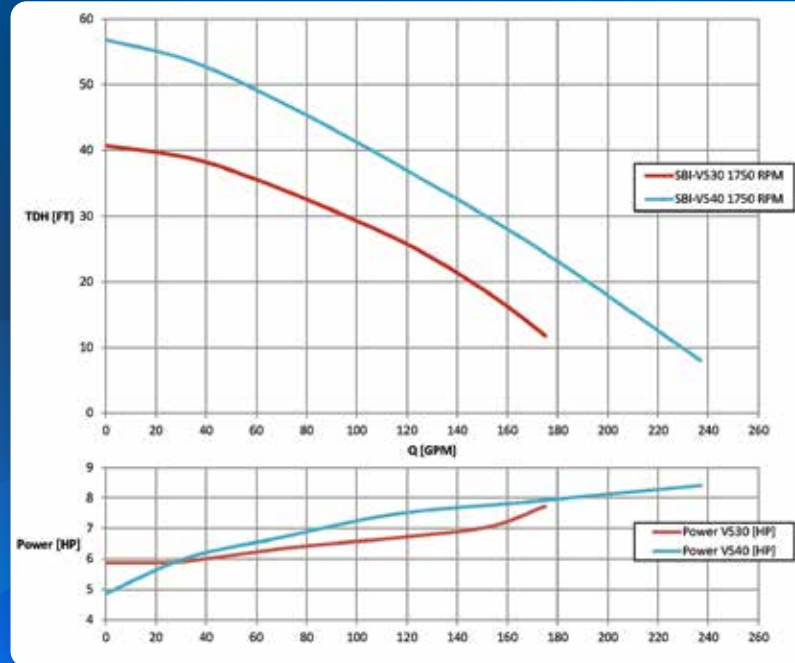
**Ampco Pumps**  
Company

Ampco Pumps Company  
2045 West Mill Road  
Glendale, WI 53209 USA  
Tel: 800.737.8671  
Fax: 414.643.4452  
www.ampcopumps.com

Ampco Pumps GmbH  
Gewerbepark West 13  
76863 Herxheim Germany  
Tel: +49 7276 5058515  
Fax: +49 7276 5058517  
info@ampcopumps.de

**Ampco Pumps**  
GmbH

## 1750 RPM (SBI ONLY)



## 3500 RPM (SBI ONLY)

