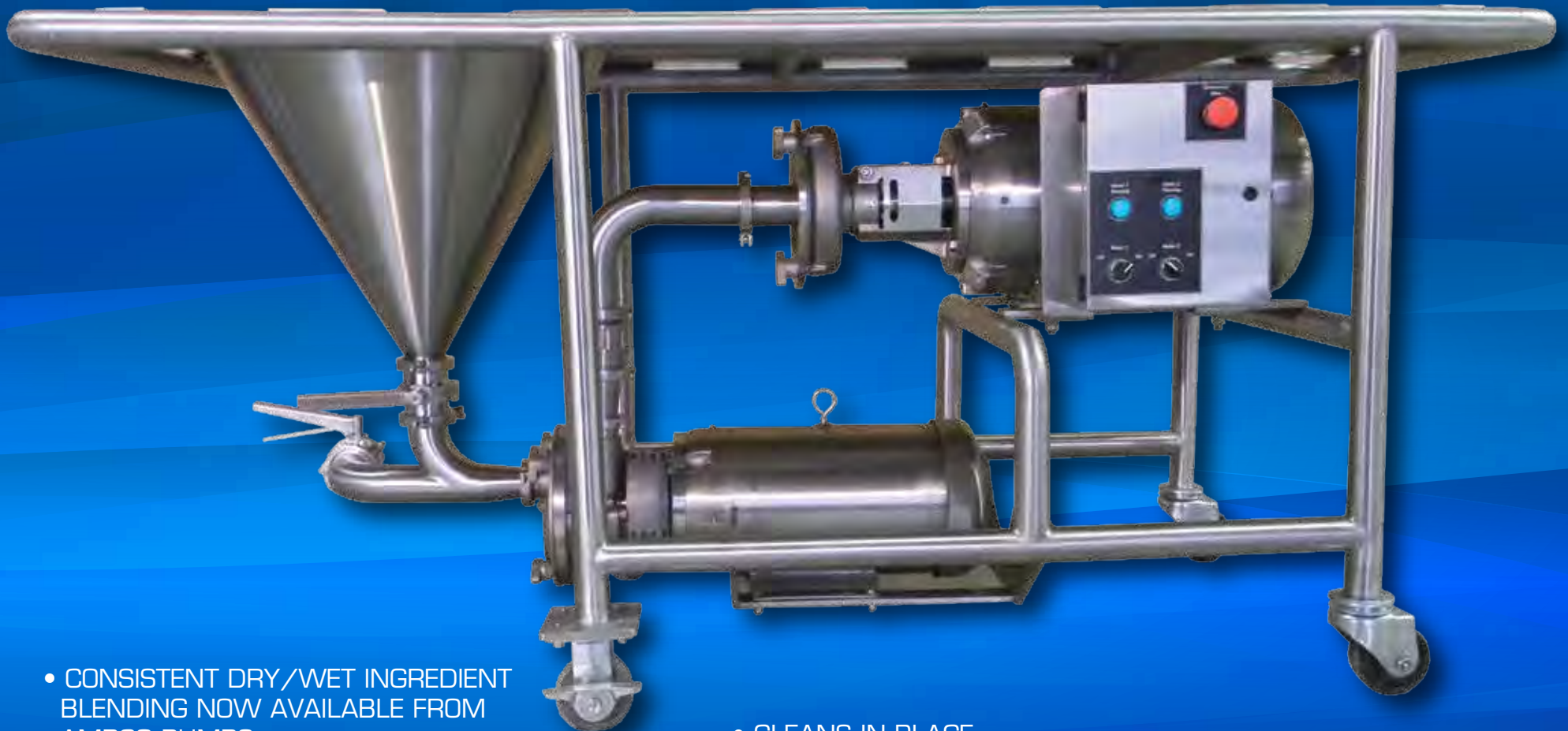


# PM POWDER MIXER

Ampco Pumps  
Company



- CONSISTENT DRY/WET INGREDIENT BLENDING NOW AVAILABLE FROM AMPCO PUMPS
- 5 MODELS - 15 HP TO 60 HP
- EASY TO REACH TABLE AND HOPPER

- CLEANS IN PLACE
- IMPROVES PROCESSING EFFICIENCY
- CUSTOMIZED TO APPLICATION

# AMPCO PM POWDER MIXER

No lumps, reduced processing time, larger batches and fully customizable!

Blend wet and dry ingredients together quickly and precisely with the Ampco PM Powder Mixer. The PM Powder Mixer will save time and money by providing optimal mixing consistency and reduced processing time. The PM Powder Mixer is set in-line so there is no limit to the batch size.

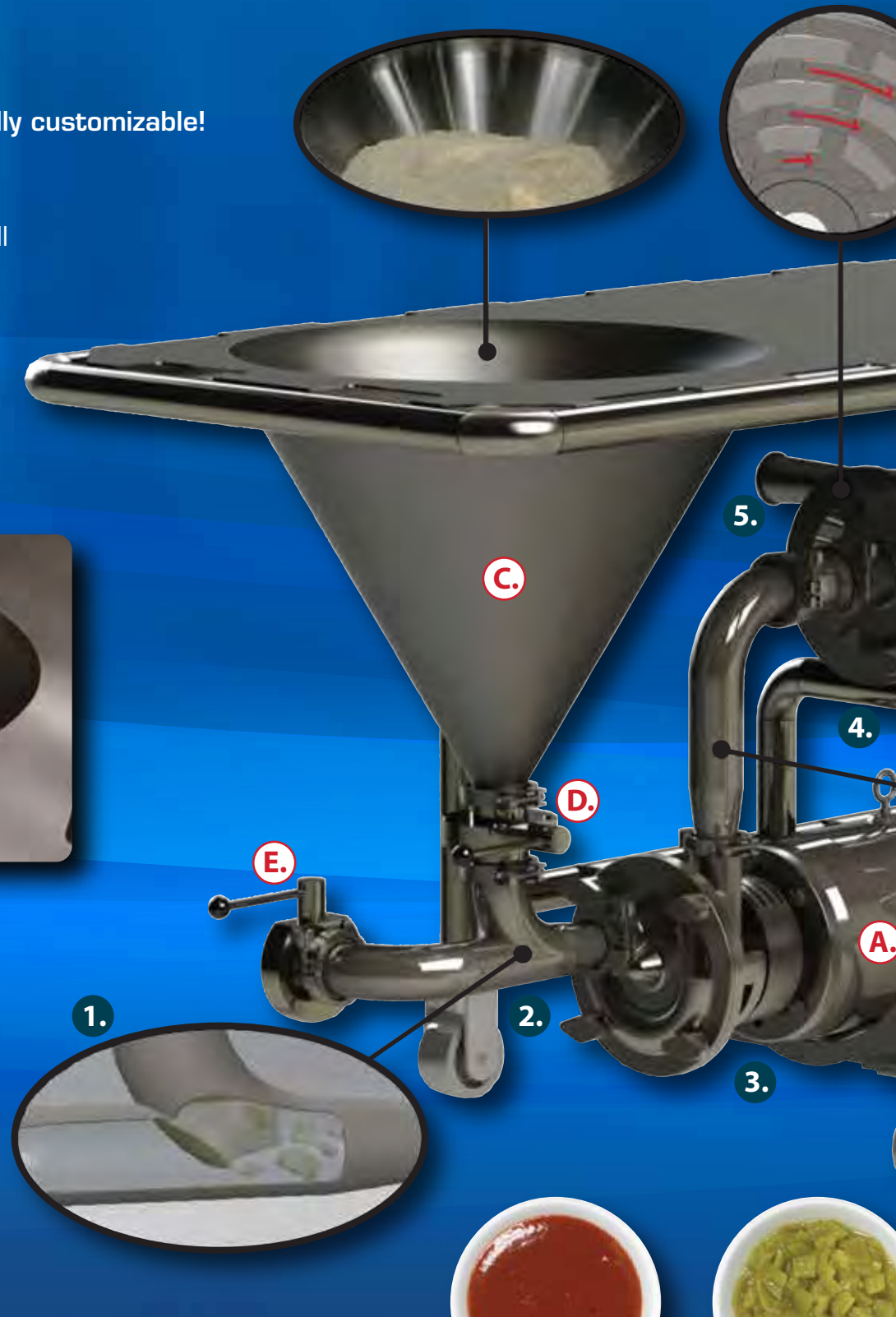
Ampco can customize a powder mixer designed to specific applications further maximizing efficiency and providing a superior end-product.

Ampco welds the hopper to the table for perfect streamlining from table top to hopper and easy cleanup. Table top is ergonomically designed for safe and operator-friendly operation.



## STANDARD FEATURES

- Butterfly valves on hopper and inlet
- Sight glass
- NEMA 4X control panel with start/stop buttons, emergency stop and overload protection
- Locking Wheels
- Easy to grip handles at both ends of table



## KEY COMPONENTS

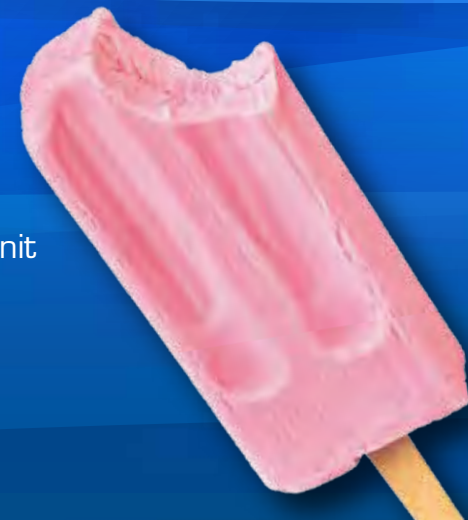
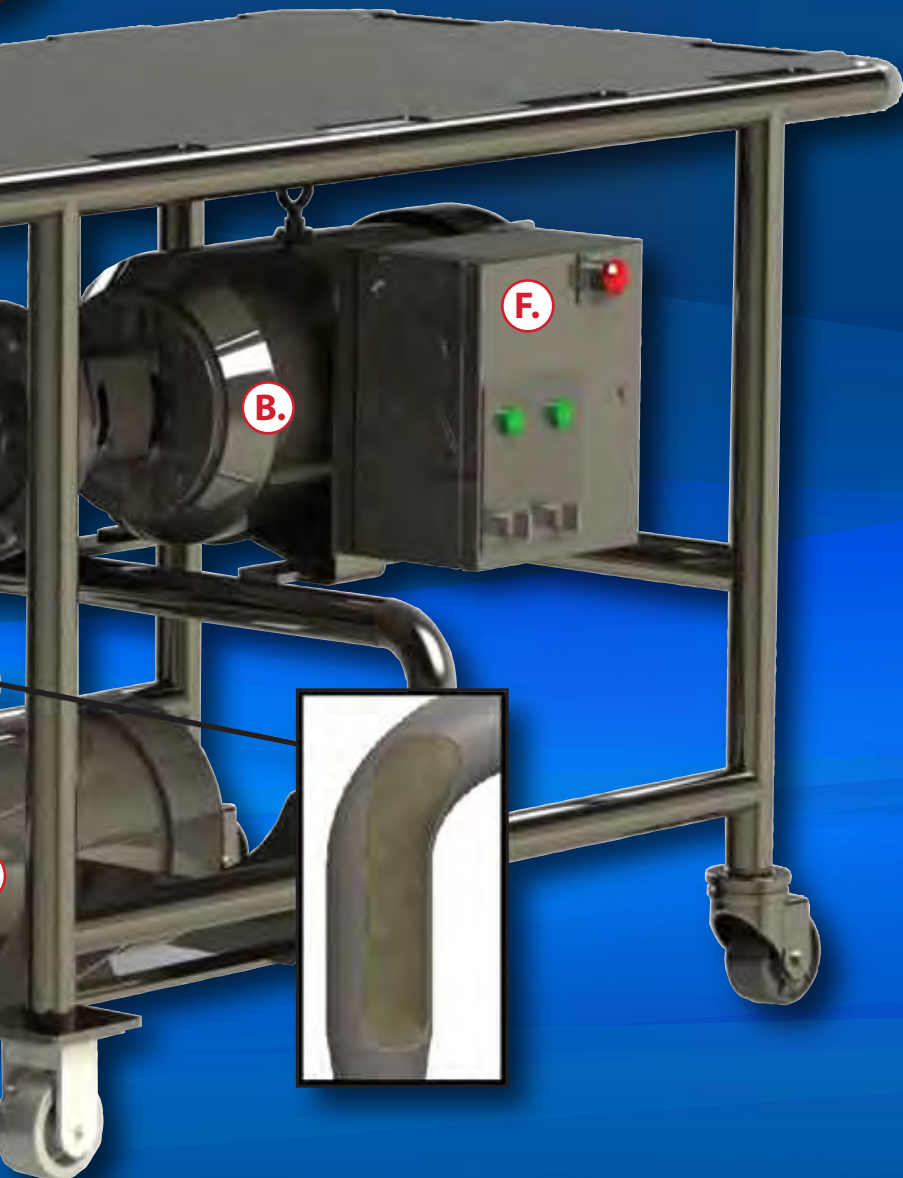
- A.** Ampco SP Liquid Ring Pump
- B.** Ampco SBH Shear Blender
- C.** Powder Hopper
- D.** Powder Control Valve
- E.** Fluid Control Valve
- F.** Dual-Motor Starter

## HOW IT WORKS

- 1.** The fluid from the batch tank is drawn in from the SP liquid ring pump.
- 2.** Powder and fluid meet in the induction tube when the hopper's valve is opened.
- 3.** Mixing begins in the SP pump - the mixture flows through a short transfer tube into the Shear Blender.
- 4.** The SBH Shear Blender runs at high speed to thoroughly continue to mix the fluid and powder.
- 5.** The final mixture is then pumped to a batch or process tank.

## OPTIONS

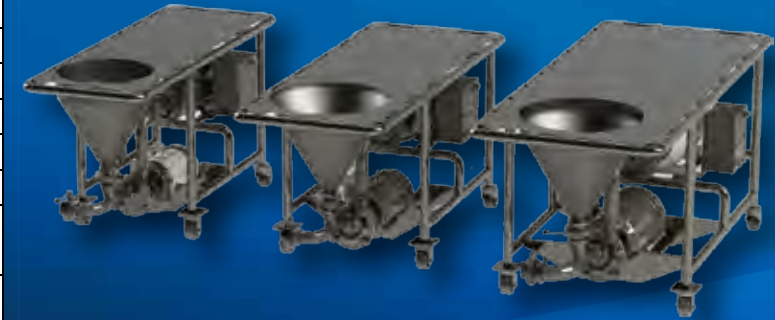
- Air operated hopper vibrator
- Electric hopper vibrator with control unit
- Hopper screen
- Ball valves
- VFD control unit



# PM POWDER MIXER SPECIFICATIONS

## PM210/522

SP Model and Power	ASP210 – 7.5 HP
SBH Model and Power	ASBH-V522 – 15 HP
Liquid Flow (Approximate)	30-65 GPM
Powder Induction Rate	50-105 lbs/min
Thickener Induction Rate	2-4 lbs/min
Hopper Diameter at top	20"
Hopper Capacity (Approximate by Volume)	2.0 ft <sup>3</sup> / 14.7 gallons
Inlet and Outlet sizes (respectively)	2.5" / 2"



## PM215/532

SP Model and Power	ASP215 – 10 HP
SBH Model and Power	ASBH-V532 – 20 HP
Liquid Flow (Approximate)	65-100 GPM
Powder Induction Rate	105-175 lbs/min
Thickener Induction Rate	2-6 lbs/min
Hopper Diameter at top	24"
Hopper Capacity (Approximate by Volume)	2.2 ft <sup>3</sup> / 16.3 gallons
Inlet and Outlet sizes (respectively)	2.5" / 2"

## PM220/532

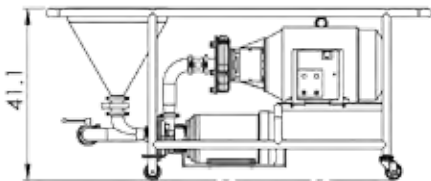
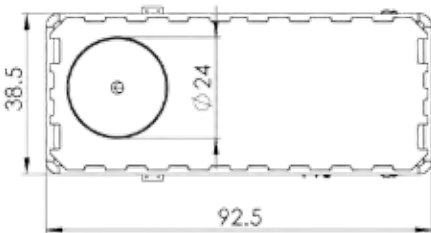
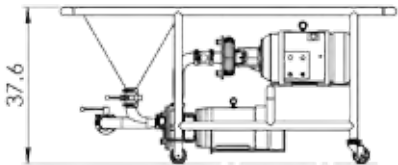
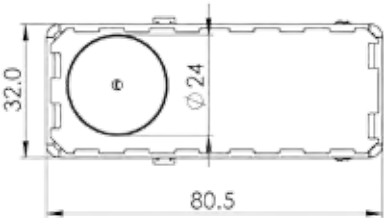
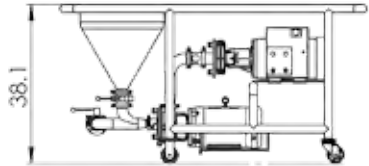
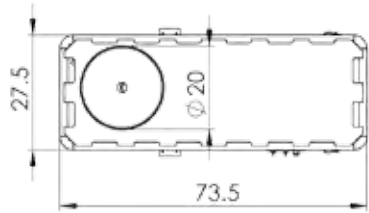
SP Model and Power	ASP220 – 10 HP
SBH Model and Power	ASBH-V532 – 20 HP
Liquid Flow (Approximate)	100-140 GPM
Powder Induction Rate	160-220 lbs/min
Thickener Induction Rate	4-9 lbs/min
Hopper Diameter at top	24"
Hopper Capacity (Approximate by Volume)	2.2 ft <sup>3</sup> / 16.3 gallons
Inlet and Outlet sizes (respectively)	2.5" / 2"

## PM225/542

SP Model and Power	ASP225 – 20 HP
SBH Model and Power	ASBH-V542 – 50 HP
Liquid Flow (Approximate)	120-175 GPM
Powder Induction Rate	200-285 lbs/min
Thickener Induction Rate	9-15 lbs/min
Hopper Diameter at top	24"
Hopper Capacity (Approximate by Volume)	3.4 ft <sup>3</sup> / 25.7 gallons
Inlet and Outlet sizes (respectively)	3" / 2.5"

## PM225/552

SP Model and Power	ASP225 – 20 HP
SBH Model and Power	ASBH-V552 – 60 HP
Liquid Flow (Approximate)	150-200 GPM
Powder Induction Rate	240-325 lbs/min
Thickener Induction Rate	11-23 lbs/min
Hopper Diameter at top	24"
Hopper Capacity (Approximate by Volume)	3.4 ft <sup>3</sup> / 25.7 gallons
Inlet and Outlet sizes (respectively)	3" / 2.5"





## PM POWDER MIXER APPLICATIONS

### BEVERAGE

Energy Drinks  
Tea  
Fruit Juice  
Vegetable Juice  
Coffee Blends

### FOOD

Salad Dressing  
Salsa  
Hot Sauce  
Mayonnaise  
Pizza Sauce  
Ketchup and Mustard

### DAIRY

Yogurt  
Sour Cream  
Ice Cream Mix  
Flavored Milk  
Eggnog  
Pudding

### PERSONAL CARE

Toothpaste  
Lotion  
Cream  
Shampoo and Conditioner  
Body Wash

### THICKENERS

Gum  
Pectin  
Starch  
Gelatin

### INGREDIENTS AND ADDITIVES

Aspartame  
Non-Fat Dry Milk  
Salt  
Citric Acid  
Sugar  
Egg Powder  
Whey Protein Concentrate  
Calcium Carbonate  
Honey  
Powder Flavoring

### BIO-PHARMACEUTICAL

Cough Syrup  
Ointment  
Lotion  
Vitamin Drink  
Contact Solution  
Coatings

The PM Powder Mixer can also be applied to industrial applications such as fertilizers, paints, herbicides, inks and dye compounds.

# AMPCO COMMITMENT TO QUALITY AND SERVICE

## PM Powder Mixer Rental

The Ampco PM powder mixer can be installed on-site for a monthly fee which will be credited against the purchase price.

## Special requirements?

Ampco Pumps will design and build the PM powder mixer to meet customized specifications.



Please visit [ampcopumps.com](http://ampcopumps.com) for dimensional drawings. Manufactured, assembled and tested in Glendale, WI.

**Ampco Pumps**  
Company

Ampco Pumps Company  
2045 West Mill Road  
Glendale, WI 53209 USA  
Tel: 800.737.8671  
Fax: 414.643.4452  
[www.ampcopumps.com](http://www.ampcopumps.com)

Ampco Pumps GmbH  
Gewerbepark West 13  
76863 Herxheim Germany  
Tel: +49 7276 5058515  
Fax: +49 7276 5058517  
[info@ampcopumps.de](mailto:info@ampcopumps.de)

**Ampco Pumps**  
GmbH